

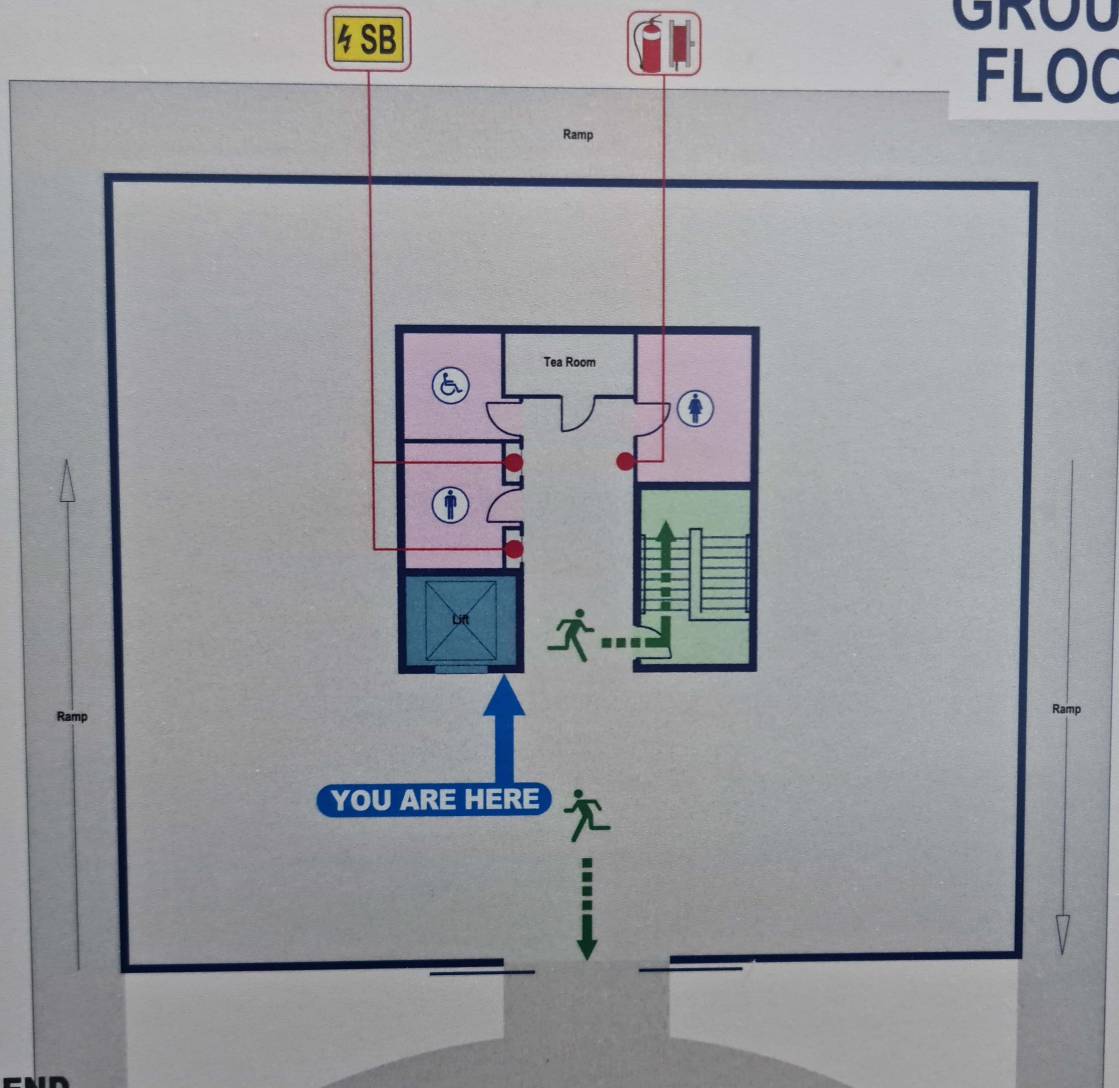
# EVACUATION DIAGRAM

WORKPLACE  
EMERGENCY  
RESPONSE  
PROCEDURES

99 NORTHBOURNE AVENUE  
TURNER, ACT 2612



GROUND  
FLOOR



## LEGEND

- EXTINGUISHER
- FIRE HOSE REEL
- SWITCH BOARD
- TOILETS
- EXIT
- ASSEMBLY AREA



## EMERGENCY PROCEDURES

- R** REMOVE people from the danger area. Safety to self, scene and survivors, in that order.
- A** ALERT all occupants and ensure an alarm has been raised.
- C** CONFINE the Smoke and Fire. Keep doors + windows closed to restrict the spread of the fire.
- E** EXTINGUISH the fire. Attempt to extinguish the fire if trained and safe to do so. Otherwise EVACUATE on the first sign of smoke and fire.